



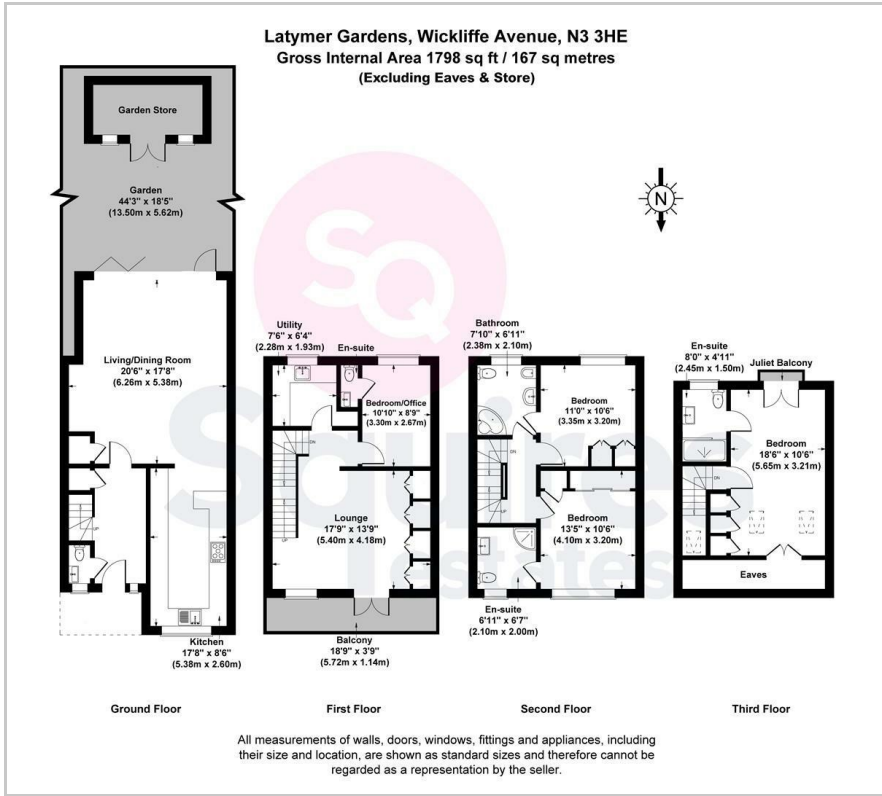
Wickliffe Avenue, Finchley, N3 3HE

£975,000 - Freehold

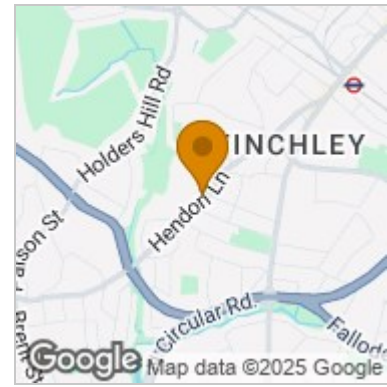
****CHAIN FREE**** A fantastic 4 bedroom, 3 bathroom mid-terraced townhouse situated within this quiet turning off Hendon Lane with Windsor Open space at the end of the road. The property has been much improved by the current owners, including a rear extension and loft conversion, and features a spacious open-plan kitchen and lounge with underfloor heating and bi-folding doors out to a South facing garden with large store. Further benefits include a 17ft reception room with built-in storage and balcony on the first floor, a utility room, a downstairs W.C., fitted wardrobes, plantation shutters and double glazing. With off street parking for 3 cars and an EV charging point, the house would make an ideal family home.

- Mid-terraced
- 4 bedrooms
- 3 bathrooms + en-suite W.C.
- South facing garden with large store
- Utility room
- Chain free
- Off street parking with EV charging point
- Downstairs W.C.
- Balcony
- Barnet council tax band F

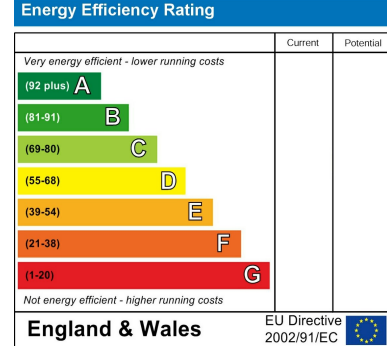
Floor Plan



Area Map



Energy Efficiency Graph



These particulars, whilst believed to be accurate are set out as a general outline only for guidance and do not constitute any part of an offer or contract. Intending purchasers should not rely on them as statements of representation of fact, but must satisfy themselves by inspection or otherwise as to their accuracy. No person in this firm's employment has the authority to make or give any representation or warranty in respect of the property.

Finchley Branch
 181a Squires Lane,
 Finchley,
 London N3 2QS
 Tel 020 8343 2111

Hendon Branch
 16 Central Circus Parade,
 Queens Road, Hendon,
 London NW4 3AS
 Tel 020 8202 0808

Mill Hill Branch
 7 Thornfield Parade,
 Holders Hill Road, Mill Hill,
 London NW7 1LN
 Tel 020 8349 3030

